

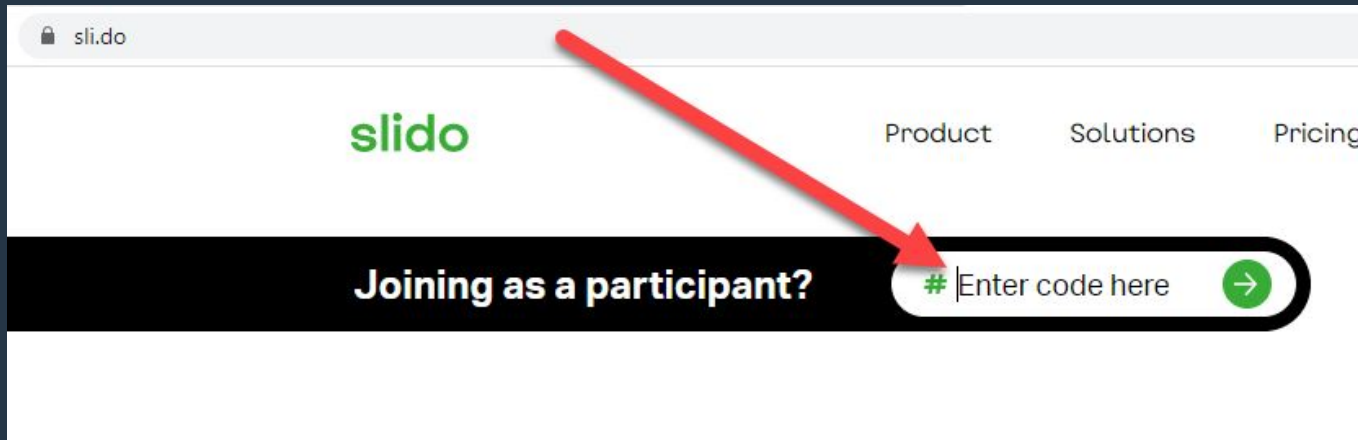
Elevate Your Instruction With **Panopto** Video

Josie Strahle, Learning Design and Production Manager
Jessica Wade, Instructional Technology Coordinator



Slido Audience Participation

Please visit [SLIDO.COM](https://www.slido.com) and enter code **0059421**



slido



How do you currently use video in your teaching?

① Start presenting to display the poll results on this slide.

Video Hosting

Unlimited space
Better viewing experience for students
Auto-captioning, searchability

Production

Quick and easy recording
Video editing
Easily share in Blackboard

Panopto Uses

Organize and manage
videos using Panopto's
folder structure

Privacy issues resolved

Student videos
In-video quizzes
Video discussions

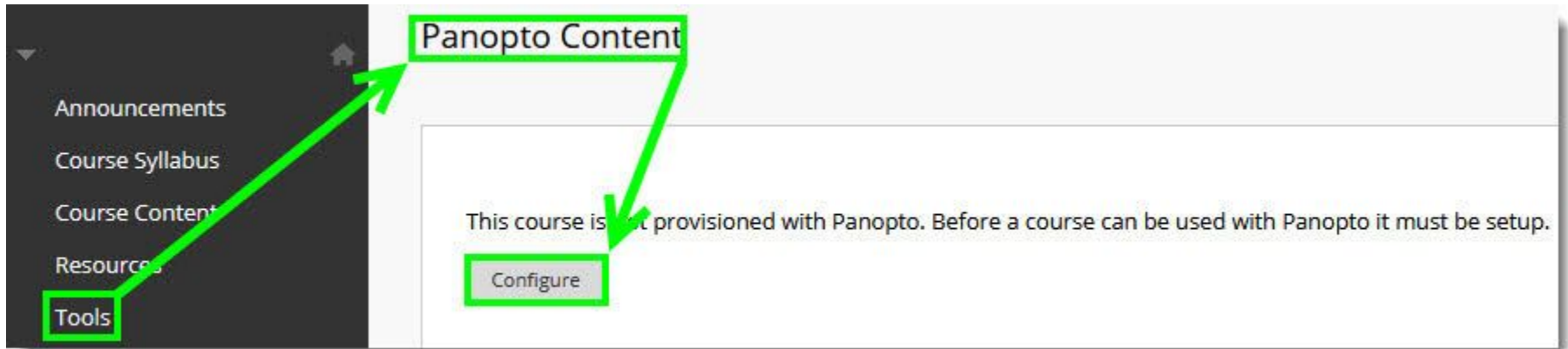
Organization

Students

How to Activate Panopto

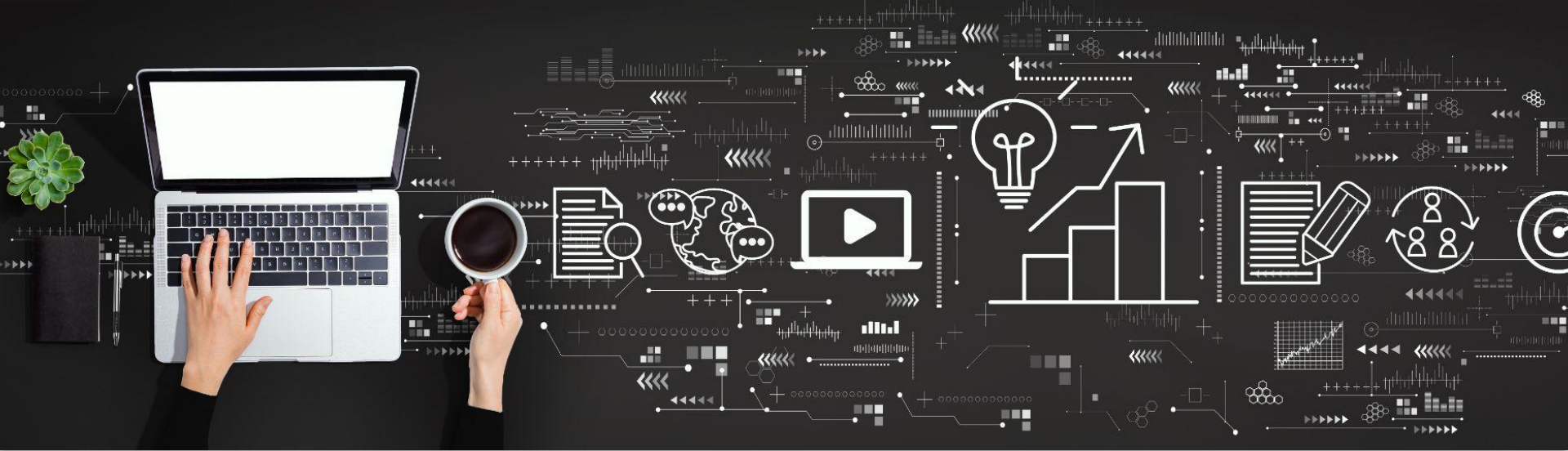
Course Tools > Panopto > Panopto Content > Configure

-This will create a folder and account for you, automatically



Let's Take A Closer Look!





PANOPTO APPLICATIONS

slido



How can video improve the learning experience?

① Start presenting to display the poll results on this slide.

Build Community and Improve Instructor Presence

- Introduce yourself via video
- Host video discussion boards
- Intersperse video announcements with written announcements



Improve Learning

- Create short videos to address misconceptions or emphasize concepts
- Create screencast videos to clarify activities or instructions
- Use in-video quizzes as low stakes practice



Student Engagement

- Improved viewing experience through Panopto
- Student video presentations
- Video discussions



Other Panopto Features

- Video data and analytics
- PMI-wide search capabilities
- Non-Blackboard applications
- Zoom/Panopto Integration



slido



How can you see yourself using Panopto?

① Start presenting to display the poll results on this slide.

Resources and Support

- Get Support
 - General Questions: panopto@pmi.edu
 - Technical issues? [Help Desk](#) or support@panopto.com
- Learn More
 - Join training with Jessica Wade: [Training calendar](#)
 - Panopto Support site: [Documentation site](#) (<https://support.panopto.com/s/>)



slido



Audience Q&A Session

① Start presenting to display the audience questions on this slide.