



Enhancing Your Synchronous Sessions

Dr. Sheila Braxton

What is Nearpod?





Ways to use Nearpod

- Presentation Delivery
- Distributing resources
- Live formative assessments
- Ongoing assessment
- Modeling
- Open-ended tasks
- Setting homework
- Sharing and using pre-made resources



Creating a Teacher Account

IT'S FREE

It's in Nearpod

Real-time insights into student understanding through interactive lessons, interactive videos, gamification, and activities — all in a single platform.

STUDENTS

Join a lesson

Enter *CODE*



TEACHERS

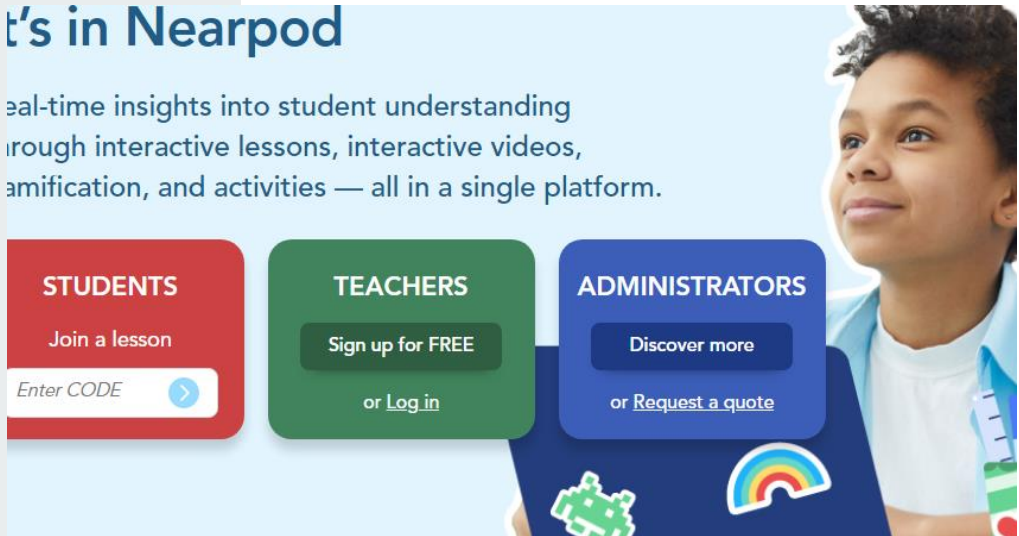
Sign up for **FREE**


or [Log in](#)

ADMINISTRATORS

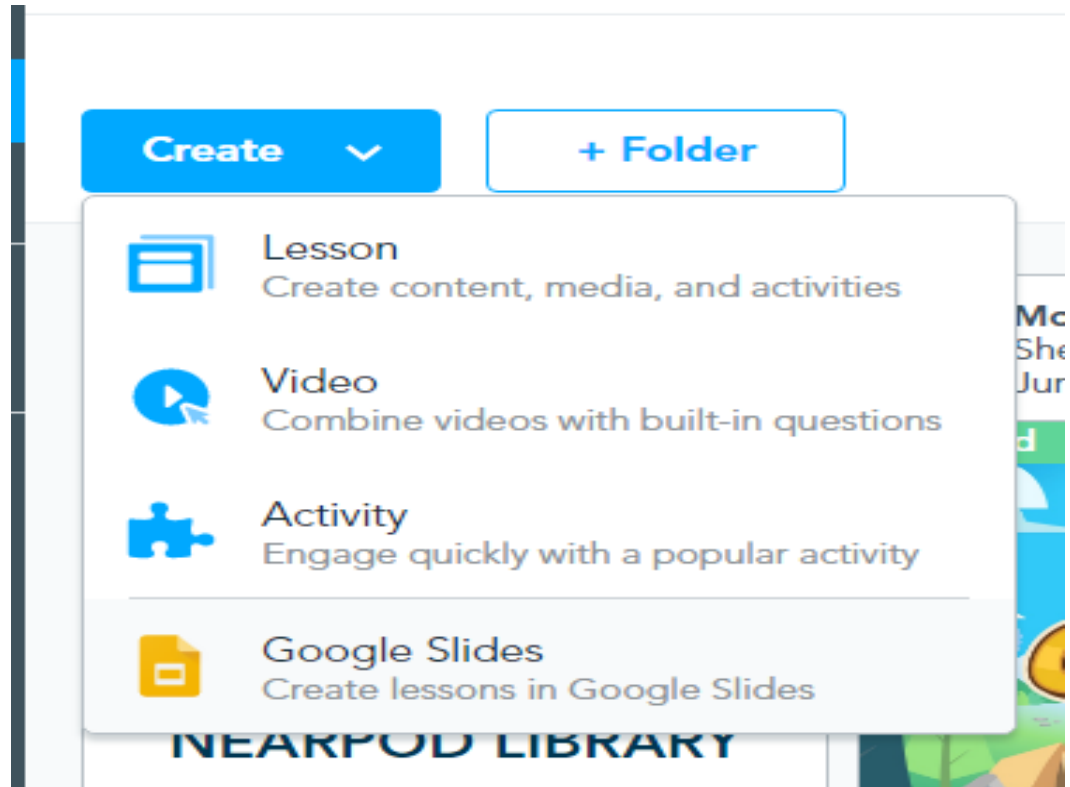
Discover more

or [Request a quote](#)





Creating Nearpod



The screenshot shows the 'Create' dropdown menu in the Nearpod interface. The menu is open, displaying four options:

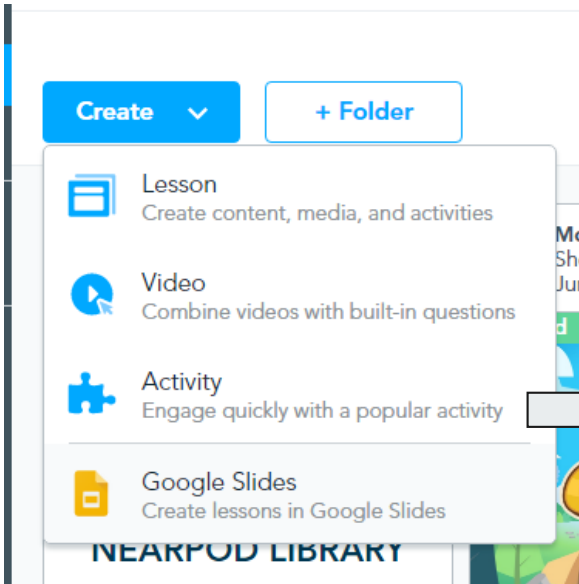
- Lesson**: Create content, media, and activities
- Video**: Combine videos with built-in questions
- Activity**: Engage quickly with a popular activity
- Google Slides**: Create lessons in Google Slides

Below the menu, the text "NEARPOD LIBRARY" is visible. To the right, a partial view of a document titled "Mc She Jur" is shown.

Creating Nearpod

The image illustrates the process of creating a Nearpod presentation. On the left, the 'Create' dropdown menu is open, showing options: Lesson (Create content, media, and activities), Video (Combine videos with built-in questions), Activity (Engage quickly with a popular activity), and Google Slides (Create lessons in Google Slides). A large grey arrow points from the 'Video' option to a video player on the right. The video player shows a man speaking, with a play button overlay. A dark blue overlay box displays a 'Multiple Choice Question' with the text 'Among living organisms, the ____...' and an 'Edit' button. A timeline at the bottom of the video player shows a blue dot at 3:47, with a button '+ Add Activity at 3:47' below it. The text 'NEARPOD LIBRARY' is visible at the bottom left of the interface.

Creating Nearpod

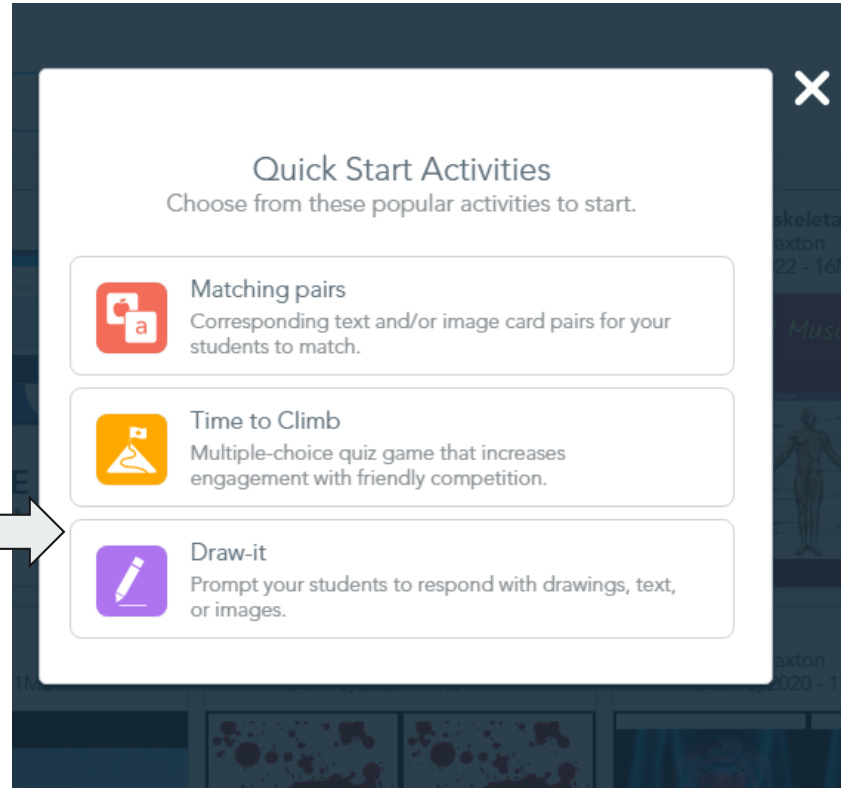


A screenshot of the Nearpod interface showing the 'Create' menu. The menu is open, displaying several options: 'Lesson' (with a document icon), 'Video' (with a play button icon), 'Activity' (with a puzzle piece icon), and 'Google Slides' (with a document icon). The 'Lesson' option is highlighted. Below the menu, the text 'NEARPOD LIBRARY' is visible.

Create ▾ **+ Folder**

- Lesson**
Create content, media, and activities
- Video**
Combine videos with built-in questions
- Activity**
Engage quickly with a popular activity
- Google Slides**
Create lessons in Google Slides

NEARPOD LIBRARY



A screenshot of the 'Quick Start Activities' dialog box. The dialog box is titled 'Quick Start Activities' and contains the text 'Choose from these popular activities to start.' Below this text are three activity options, each with an icon and a description:

- Matching pairs**
Corresponding text and/or image card pairs for your students to match.
- Time to Climb**
Multiple-choice quiz game that increases engagement with friendly competition.
- Draw-it**
Prompt your students to respond with drawings, text, or images.

Quick Start Activities
Choose from these popular activities to start.

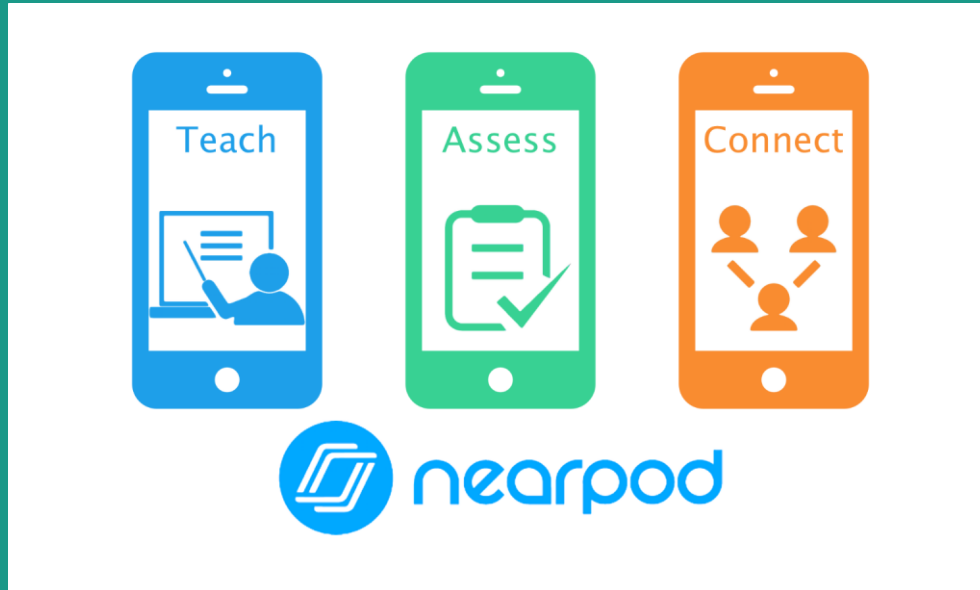
- Matching pairs**
Corresponding text and/or image card pairs for your students to match.
- Time to Climb**
Multiple-choice quiz game that increases engagement with friendly competition.
- Draw-it**
Prompt your students to respond with drawings, text, or images.

Features cont'd

- ★ Brainstorming idea
- ★ Suggestions
- ★ What you learned

The screenshot displays the Nearpod interface. At the top right, there are navigation options: 'Create' with a dropdown arrow, 'Quick Launch' with a bell icon, and a user profile icon. A 'Quick Launch' menu is open, showing three options: 'Open Ended Question' (with a question mark icon), 'Timer' (with a stopwatch icon), and 'Collaborate Board' (with a folder icon). Below the menu, there is a form for creating a 'Collaborate Board Topic'. The form has a 'system' label and a 'B' label. It includes a 'Description' field and a button that says 'Add image, audio, or other media'. At the bottom of the interface, there is a corkboard area with a blue 'Instructions' header.

Let's Check Out Nearpod



Questions?

